



Flu Watch

MMWR Week 35
August 25 – August 31, 2013

Summer Edition

South Carolina Department of Health and Environmental Control
Division of Acute Disease Epidemiology

Contents

Summary.....1

ILINet.....2

Positive Confirmatory Tests.....3

Positive rapid tests.....4

Hospitalizations and deaths....4

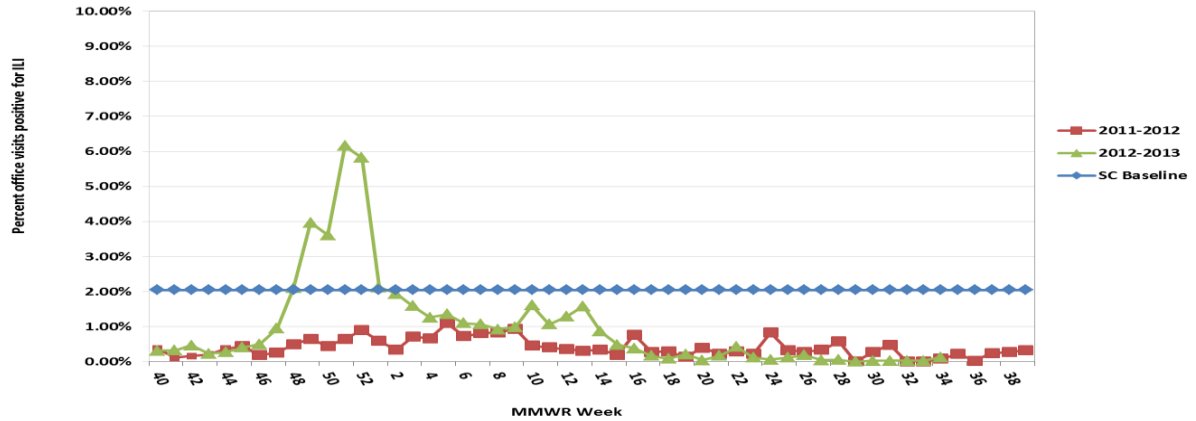
Current influenza activity level: No activity

All data are provisional and may change as new reports are received.

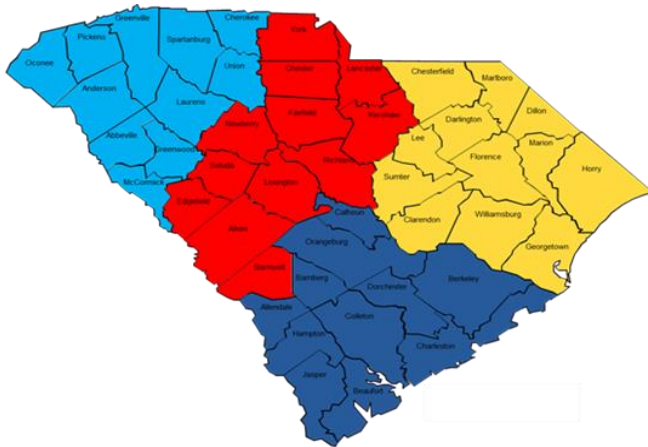
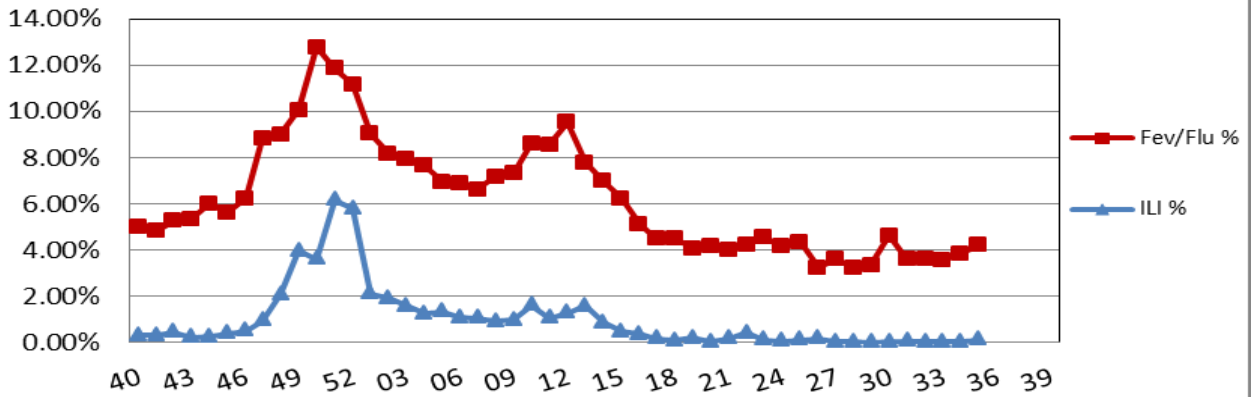
ILI Activity, Positive Confirmatory Tests, Influenza Associated Hospitalizations and Deaths, and Positive Rapid Tests

	Previous week	Current week	△	Cumulative (9/30/12-8/31/13)
Visits for ILI to ILINet providers (%)	.03	.13	▲ .10	NA
Positive confirmatory tests	0	0	0	1203
Lab confirmed flu hospitalizations	0	0	0	1721
Lab confirmed flu deaths	0	0	0	46
Positive rapid tests	1	3	▲ 2	63,712

**Percentage of Visits for Influenza-like Illness (ILI) Reported by Sentinel Providers in South Carolina
2011-2012 and 2012-2013 Influenza Seasons**



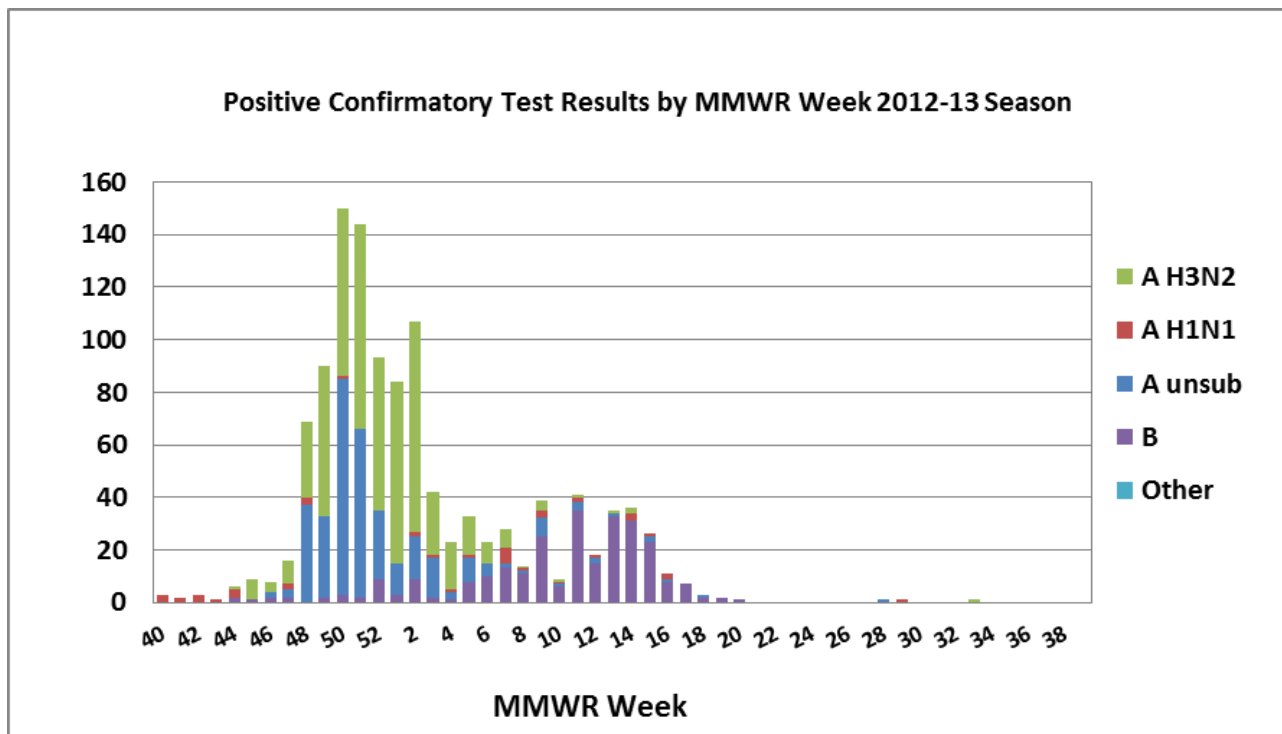
**SC Fever Flu Percentage Compared to ILI Percentage
September 30, 2012 - August 31, 2013**



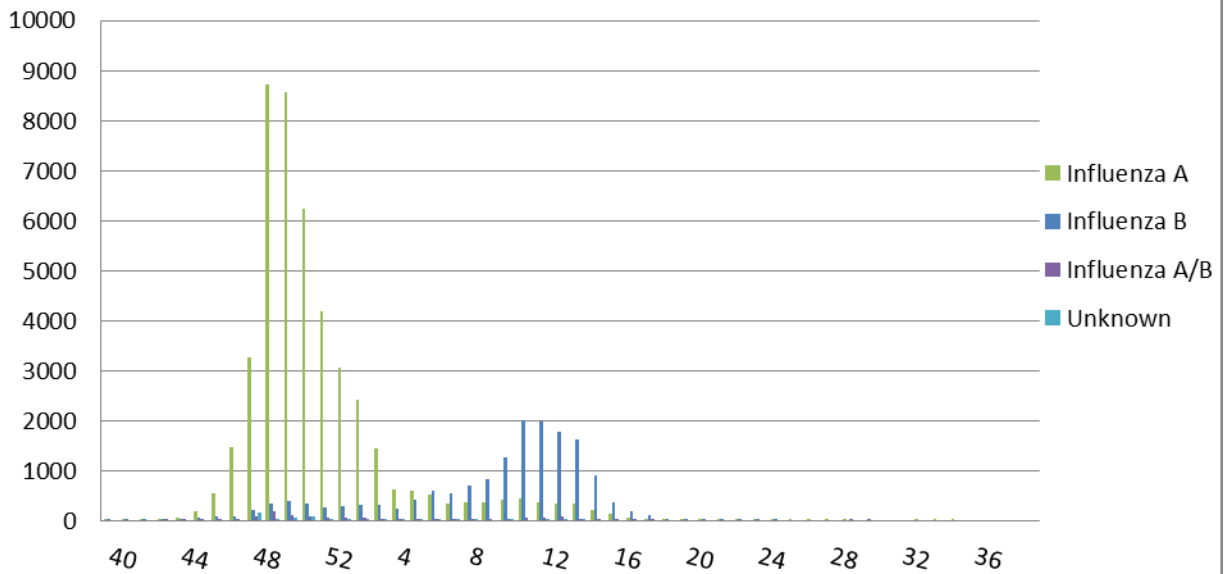
ILI Percentage by Geographic Region

Geographic Region	ILI %	# of Reporters
Upstate	.09	4
Midlands	0	3
Pee Dee	.79	1
Low Country	NA	0

<i>Positive confirmatory influenza test results* Cumulative (09/30/12 – 8/31/13)</i>		
	BOL	Other clinical labs
Number of specimens tested	576	NA
Number of positive specimens	306 (53.1%)	897
Influenza A unsubtype		333 (37.1%)
Influenza A H1N1	24 (7.8%)	19 (2.1)
Influenza A H3N2	233 (76.1%)	316 (35.2%)
Influenza B	49 (16%)	226 (25.2%)
Other		3 (.33%)



Positive Rapid Tests by MMWR Week and Type



Laboratory Confirmed Influenza Case rate/100,000 Hospitalizations (n=1721) and Deaths (n=46) by age group September 30, 2012 - August 31, 2013

