



# Flu Watch

MMWR Week 26  
June 23 - June 29, 2013

Summer Edition

South Carolina Department of Health and Environmental Control  
Division of Acute Disease Epidemiology

## Contents

Summary.....1

ILINet.....2

Positive Confirmatory Tests.....3

Positive rapid tests.....4

Hospitalizations and deaths....4

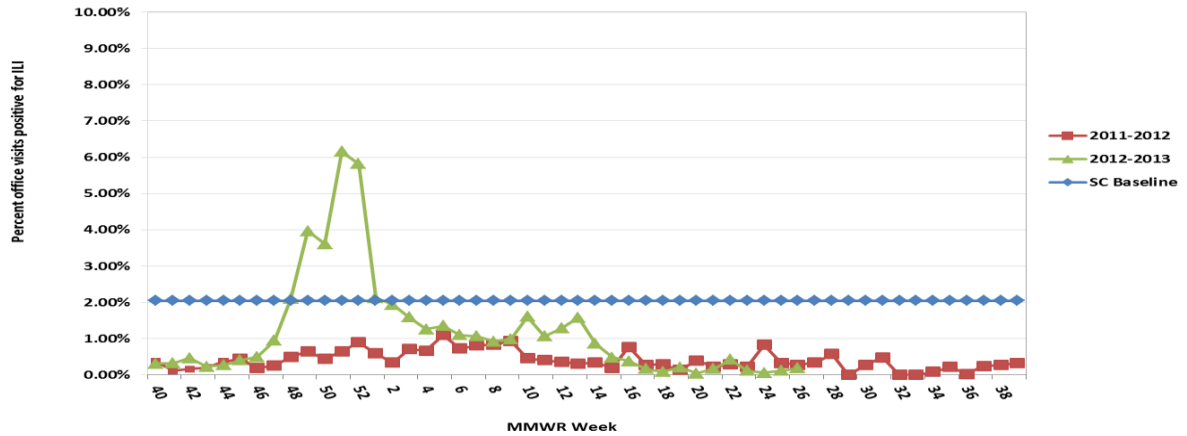
**Current influenza activity level: NO ACTIVITY**

*All data are provisional and may change as new reports are received.*

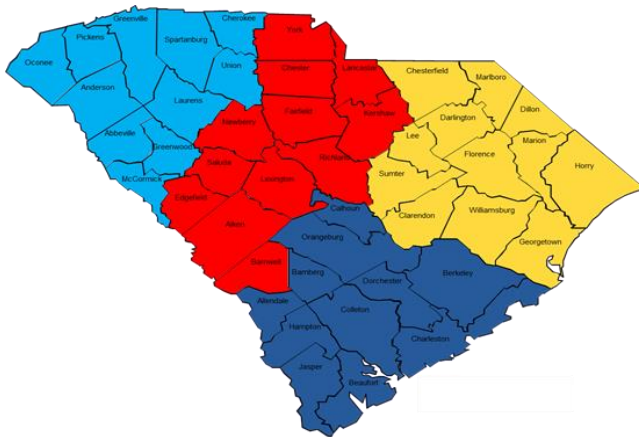
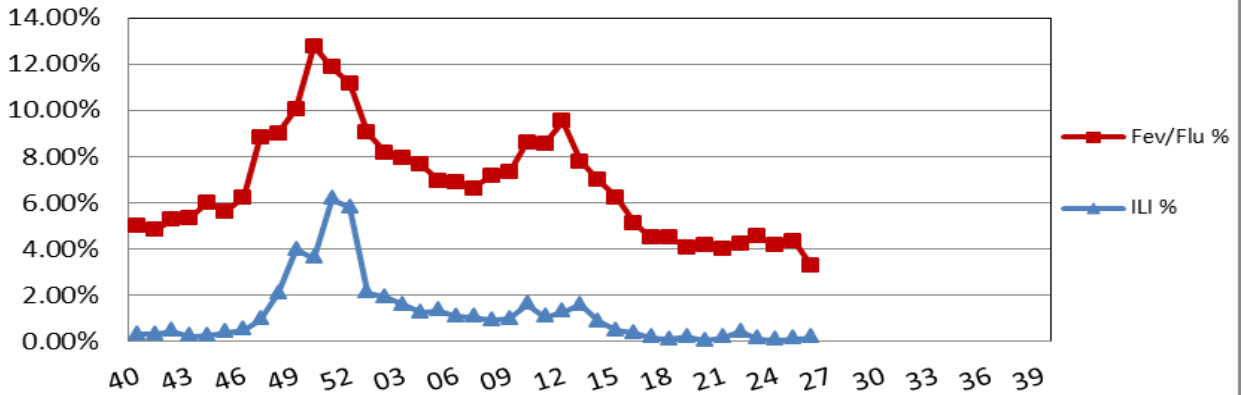
**ILI Activity, Positive Confirmatory Tests, Influenza Associated Hospitalizations and Deaths, and Positive Rapid Tests**

	<i>Previous week</i>	<i>Current week</i>	$\Delta$	Cumulative (9/30/12-6/29/13)
Visits for ILI to ILINet providers (%)	.12	.19	$\blacktriangle$ .07	NA
Positive confirmatory tests	0	0	0	1178
Lab confirmed flu hospitalizations	0	0	0	1720
Lab confirmed flu deaths	0	0	0	46
Positive rapid tests	8	2	$\blacktriangledown$ 6	58,725

**Percentage of Visits for Influenza-like Illness (ILI) Reported by Sentinel Providers in South Carolina  
2011-2012 and 2012-2013 Influenza Seasons**



**SC Fever Flu Percentage Compared to ILI Percentage  
September 30, 2012 - June 29, 2013**



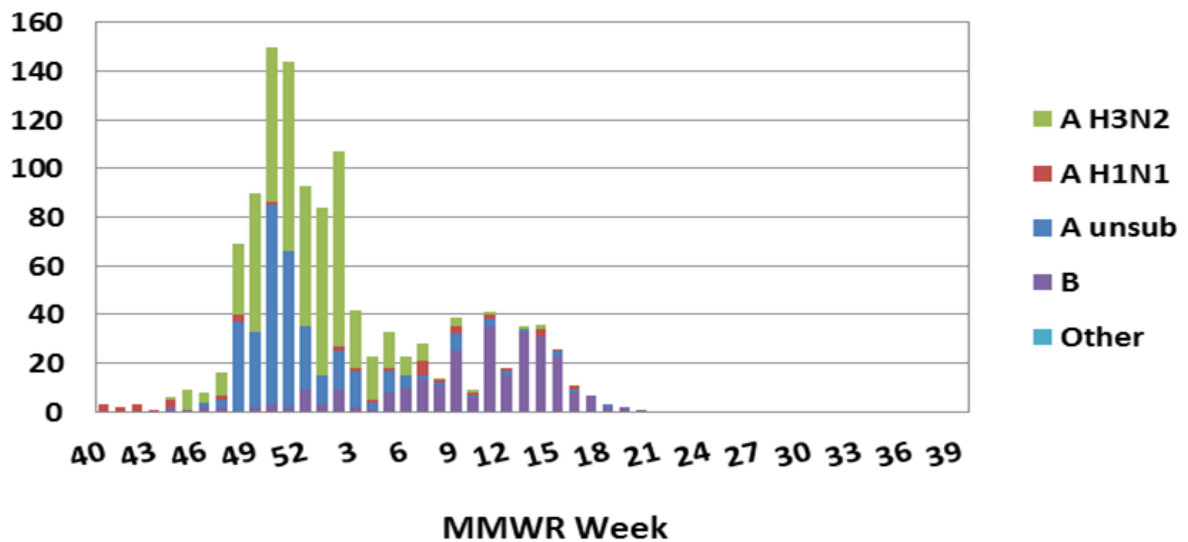
ILI Percentage by Geographic Region

Geographic Region	ILI %	# of Reporters
Upstate	0	2
Midlands	0	5
Pee Dee	1.25	1
Low Country	NA	0

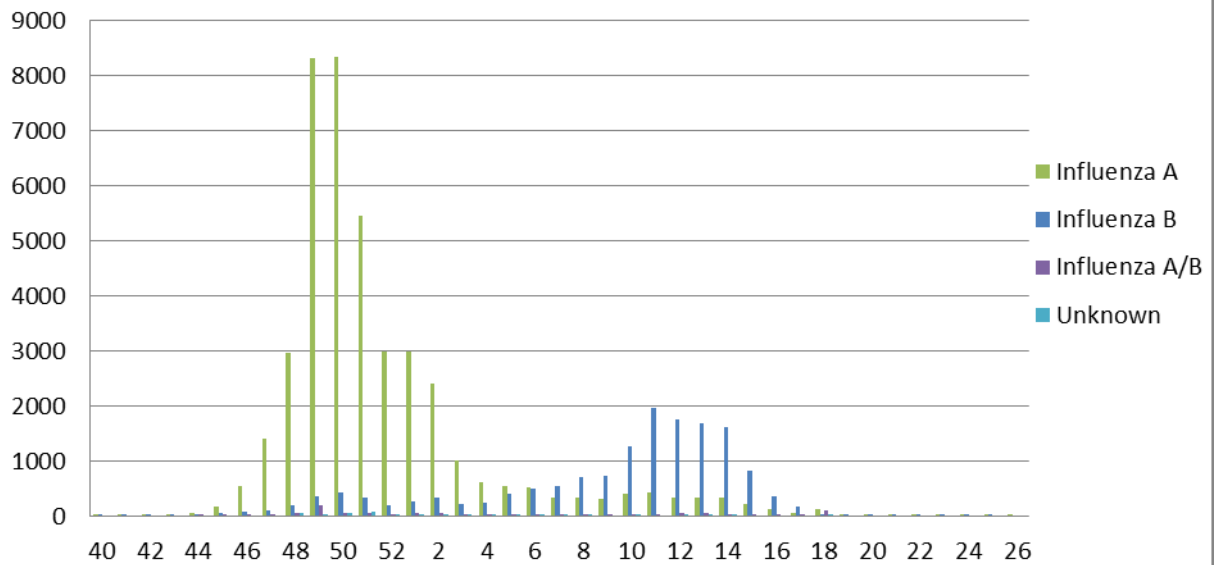
**Positive confirmatory influenza test results\*  
Cumulative (09/30/12 – 6/29/13)**

	BOL	Other clinical labs
Number of specimens tested	558	NA
Number of positive specimens	319 (57.2%)	859
Influenza A unsubtype		325 (37.8%)
Influenza A H1N1	24 (7.5%)	19 (2.2)
Influenza A H3N2	245 (76.8%)	311 (36.2%)
Influenza B	50 (15.7%)	201 (23.4%)
Other		3 (.35%)

**Positive Confirmatory Test Results by MMWR Week  
2012-13 Season**



### Positive Rapid Tests by MMWR Week and Type



### Laboratory Confirmed Influenza Case rate/100,000 Hospitalizations (n=1720) and Deaths (n=46) by age group September 30, 2012 - June 29, 2013

